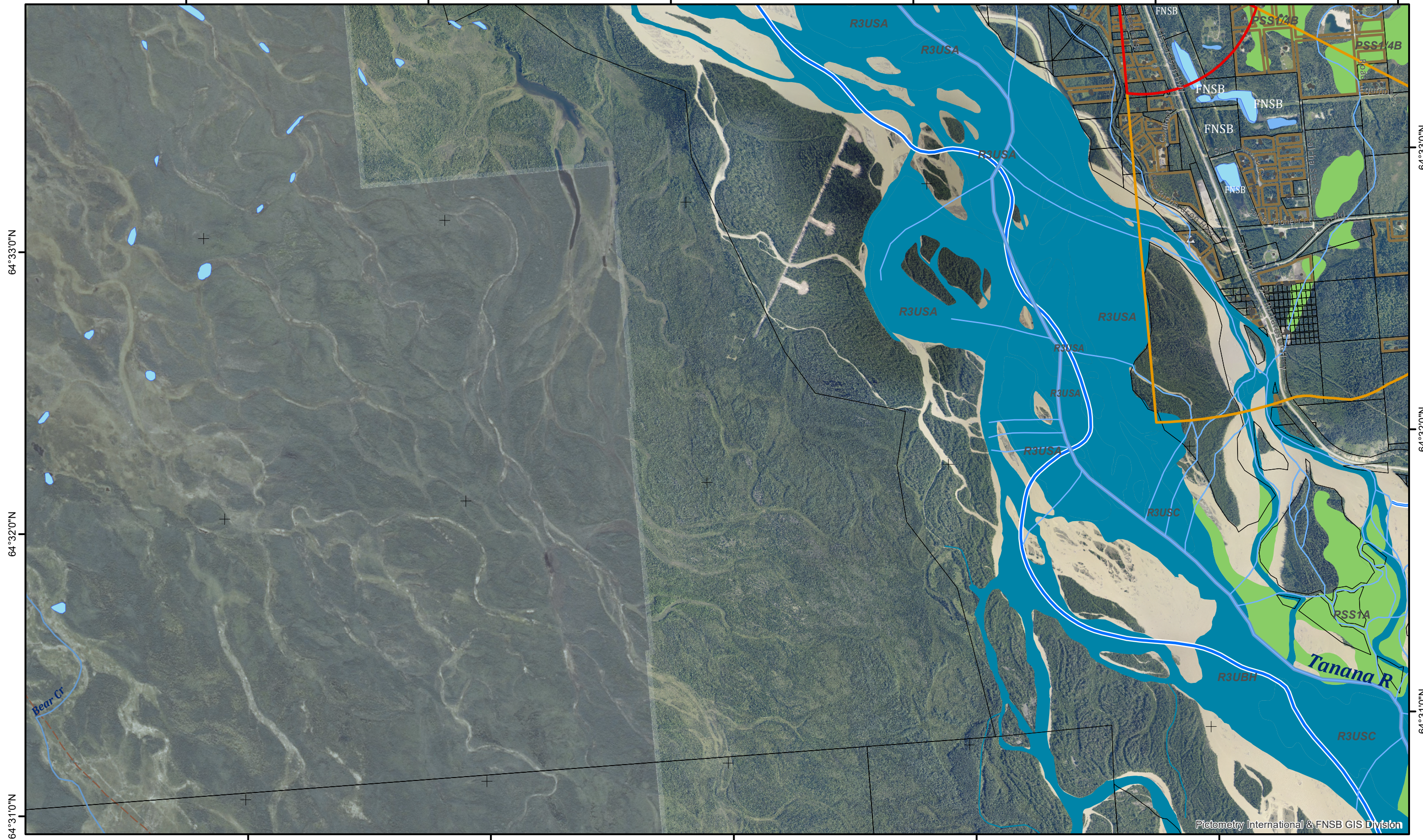


Map 40

Map



64°33'0"N

64°32'0"N

64°31'0"N

64°33'0"N

64°32'0"N

64°31'0"N

147°10'0"W

147°8'0"W

147°6'0"W

147°4'0"W

147°2'0"W

0 0.25 0.5 1 1.5 2 Miles

Pictometry International & FNSB GIS Division